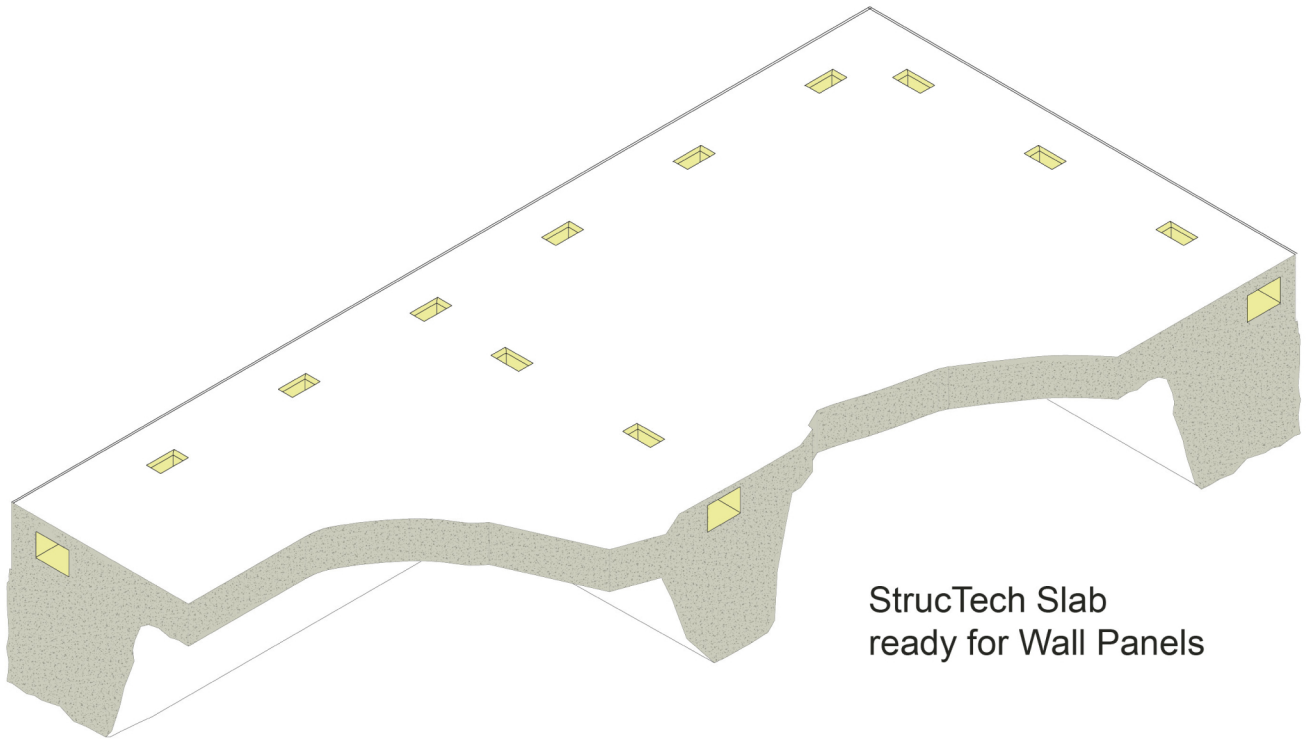


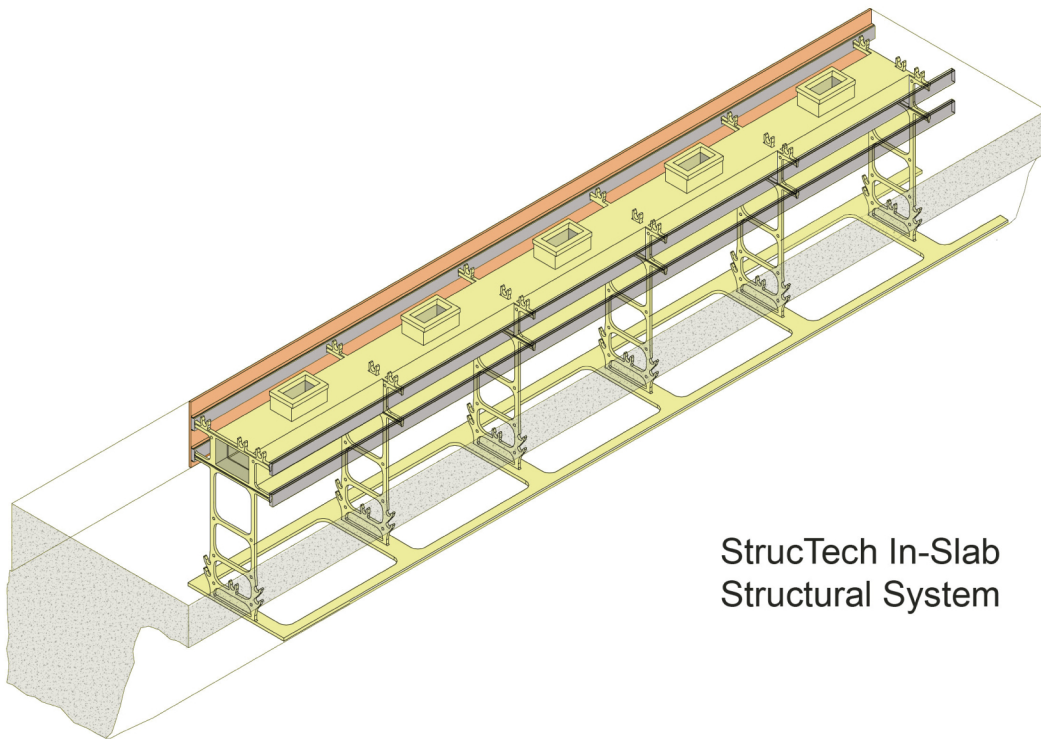


StrucTech 2010



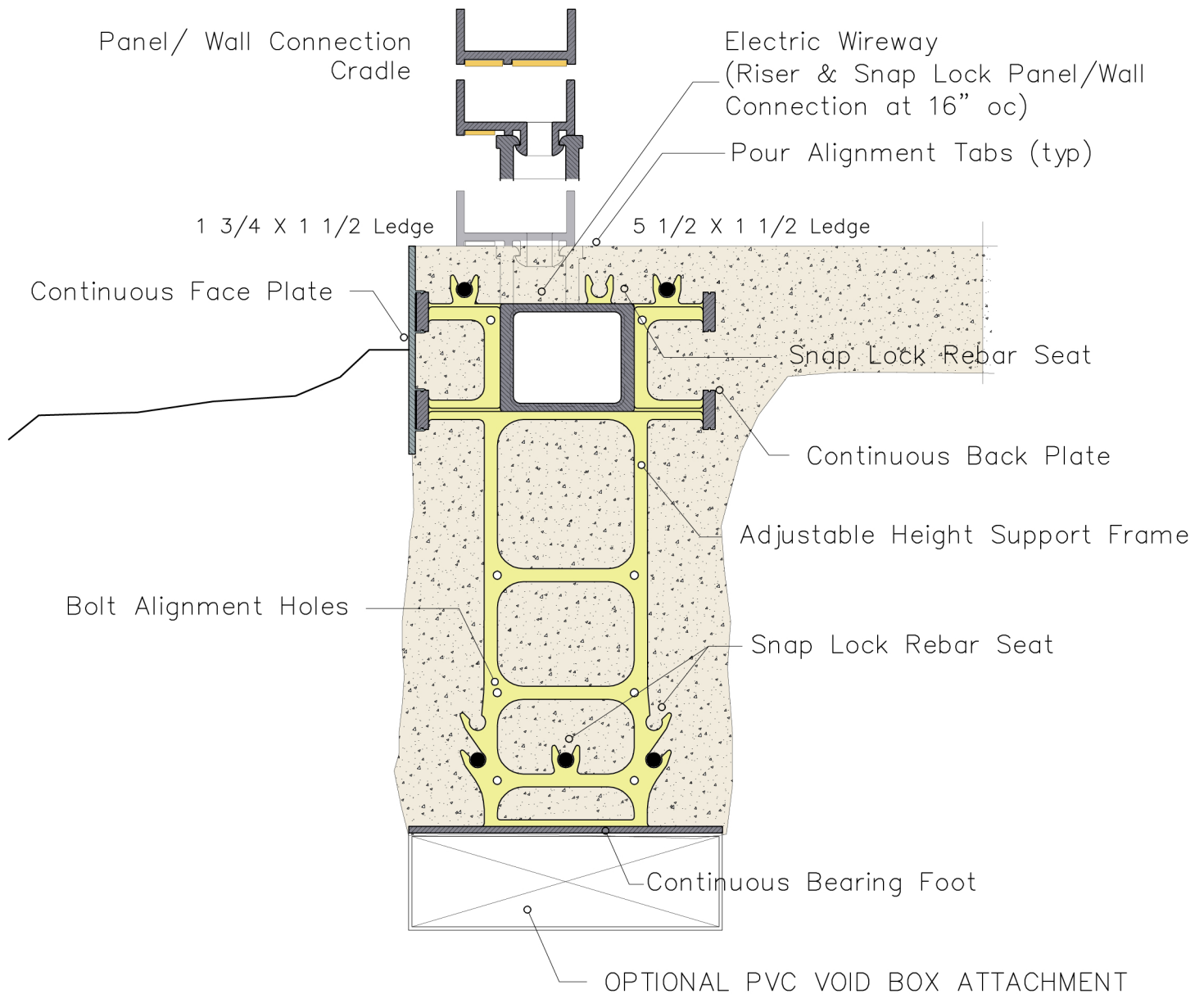


StrucTech Slab  
ready for Wall Panels



StrucTech In-Slab  
Structural System





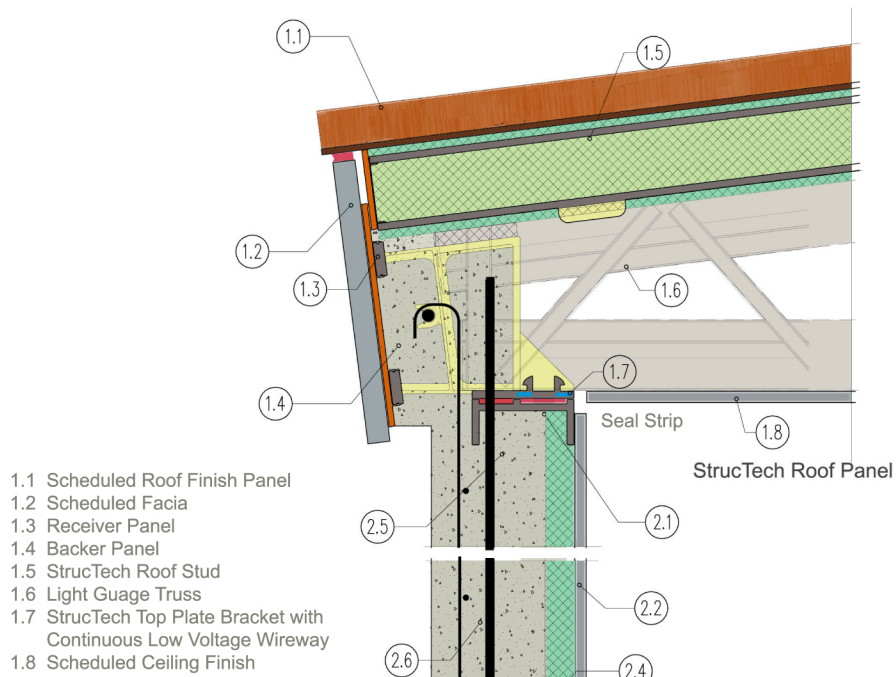
SYNTHETIC PRE-FORMED REVERSIBLE FOUNDATION FORMWORK SYSTEM WITH INTEGRAL ELECTRIC WIREWAY, SELF-ALIGNMENT, REINFORCING STEEL SEATS FOR CONTROLLED SPACING AND WALL CONNECTION PLATE. DESIGNED AS AN INTEGRAL PART OF THE FOUNDATION SYSTEM TO REMAIN IN PLACE.

MADE FROM CONTINUOUSLY EMBOSSED EPS (EXPANDED POLYSTYRENE); EPOXY COMPOSITE POLYOLEFIN; or OTHER HIGH DENSITY SYNTHETIC COMPATIBLE WITH CONCRETE. FACE AND PANEL SEAT MAY ALSO BE EXTRUDED ALUM. or OTHER MATERIALS.

ALLOWS FOR SQUARE EDGE; 1.75" AND 5.5" WIDE MASONRY/STUCCO/STEEL LEDGES; 3.5", 3.625", 6" AND 8" FLUSH FRAMES.

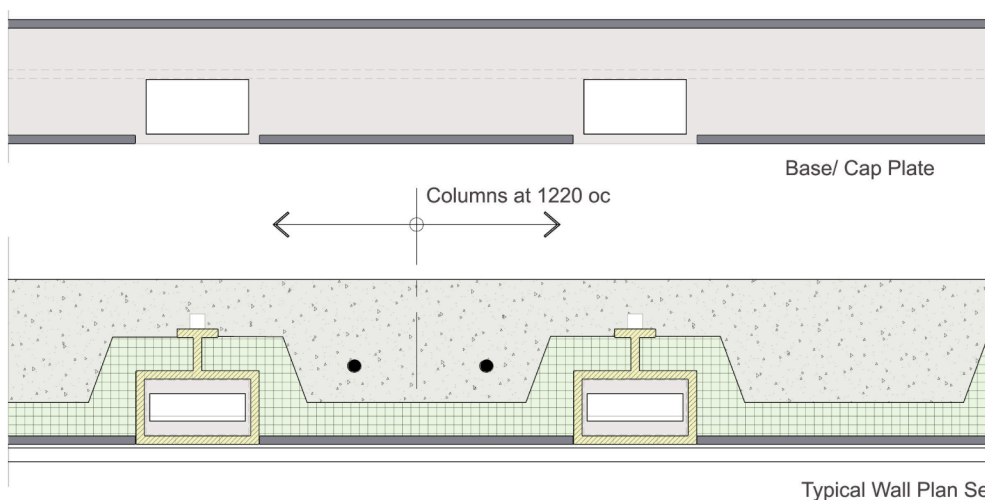
PREFORMED INSIDE AND OUTSIDE 90° & 45° CORNERS



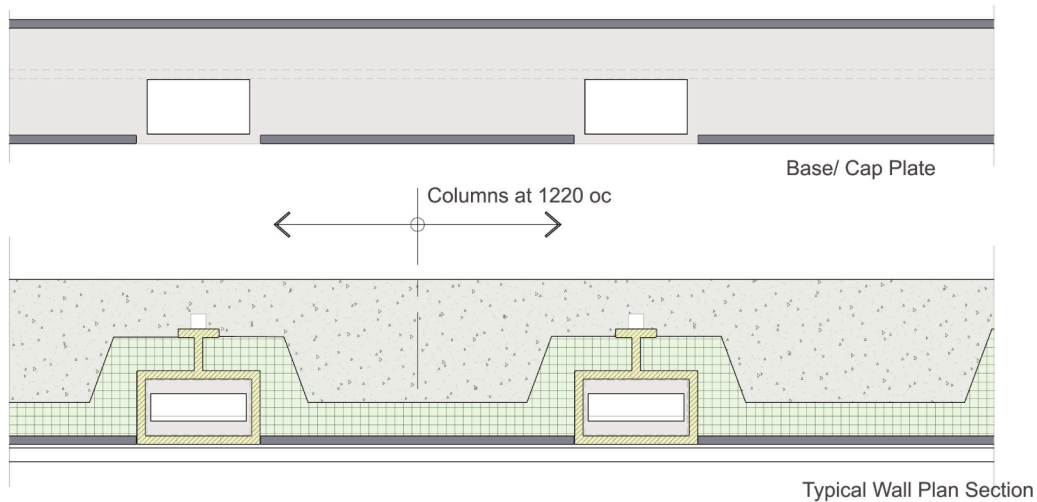
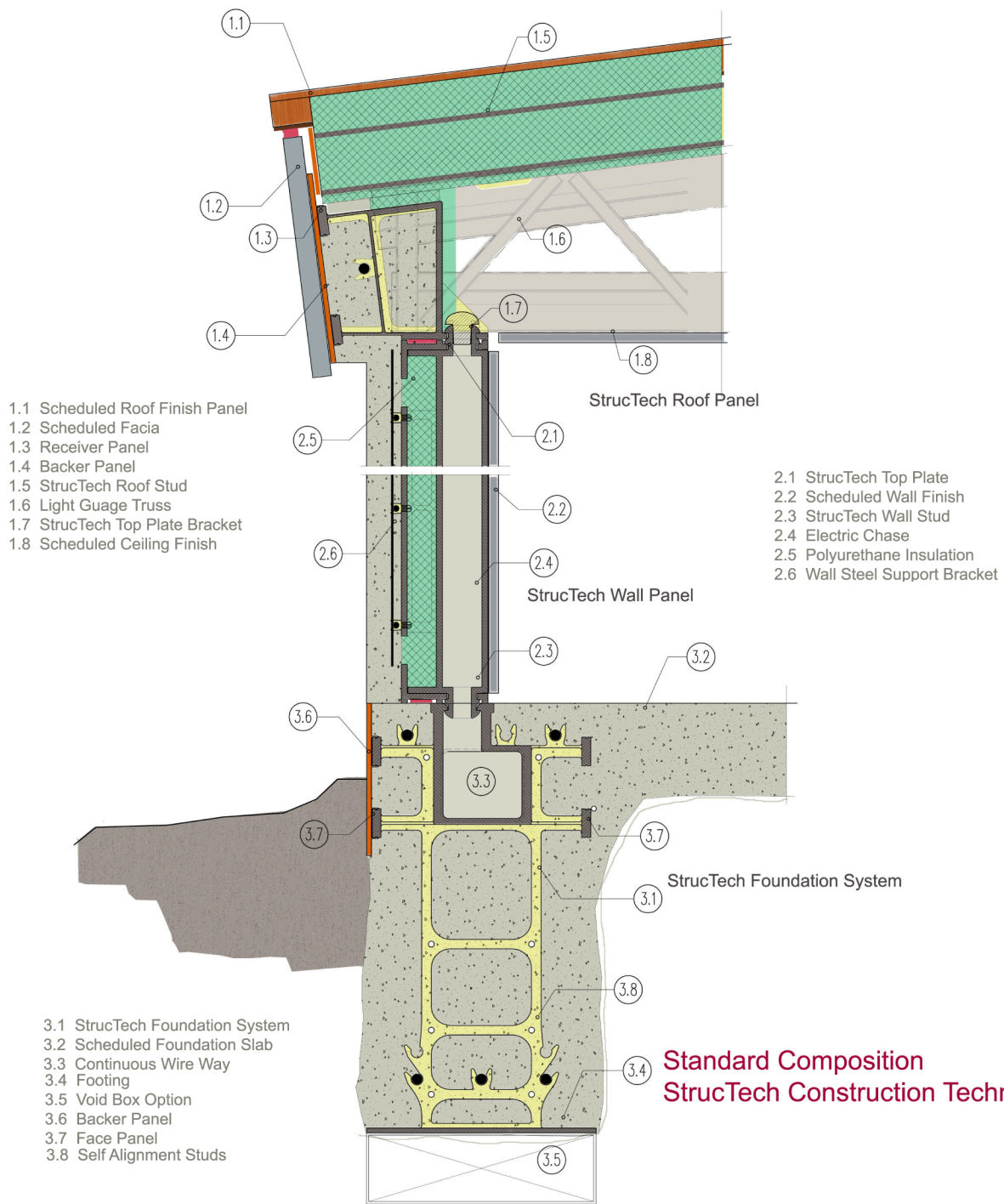


- 3.1 StrucTech Foundation System  
3.2 Scheduled Foundation Slab  
3.3 Continuous Wire Way  
3.4 Footing  
3.5 Void Box Option  
3.6 Backer Panel  
3.7 Face Panel  
3.8 Self Alignment Studs

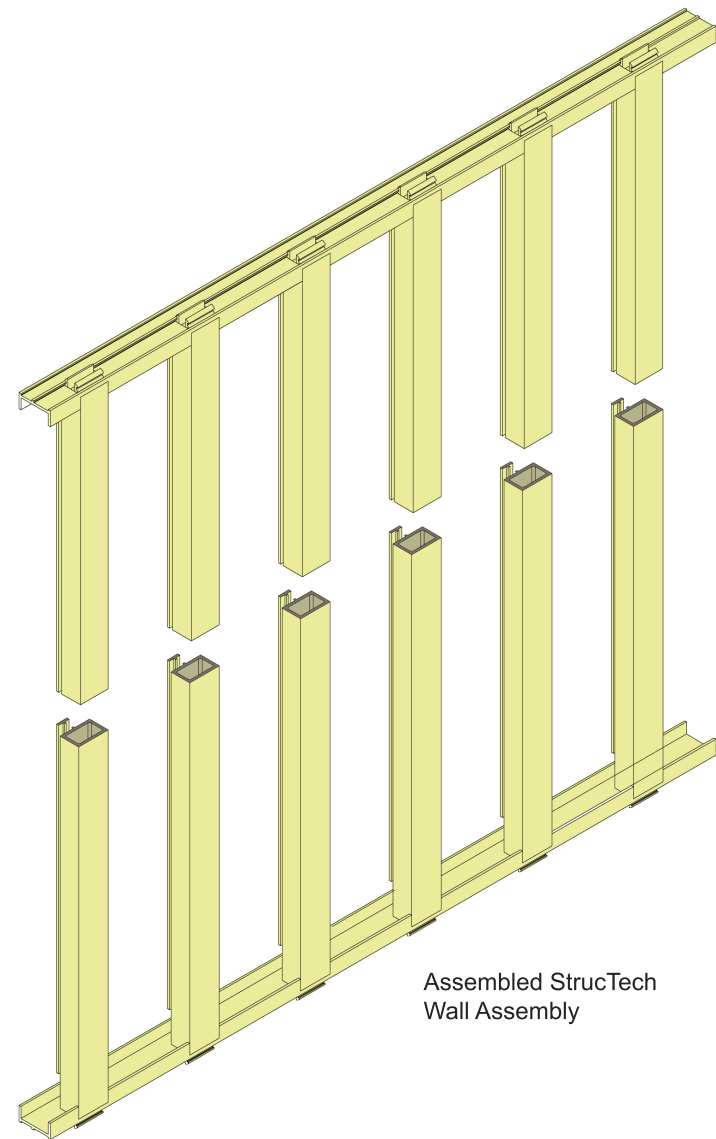
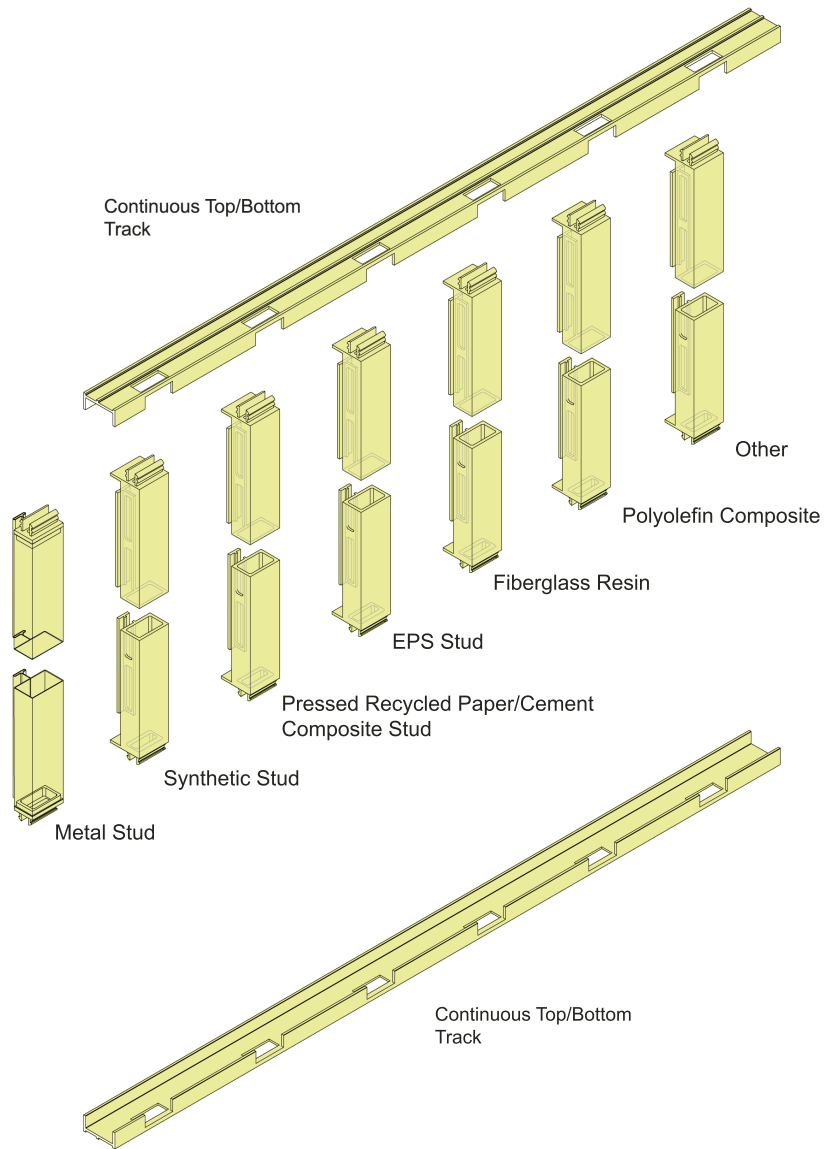
**Standard Composition  
StrucTech Construction Technology**



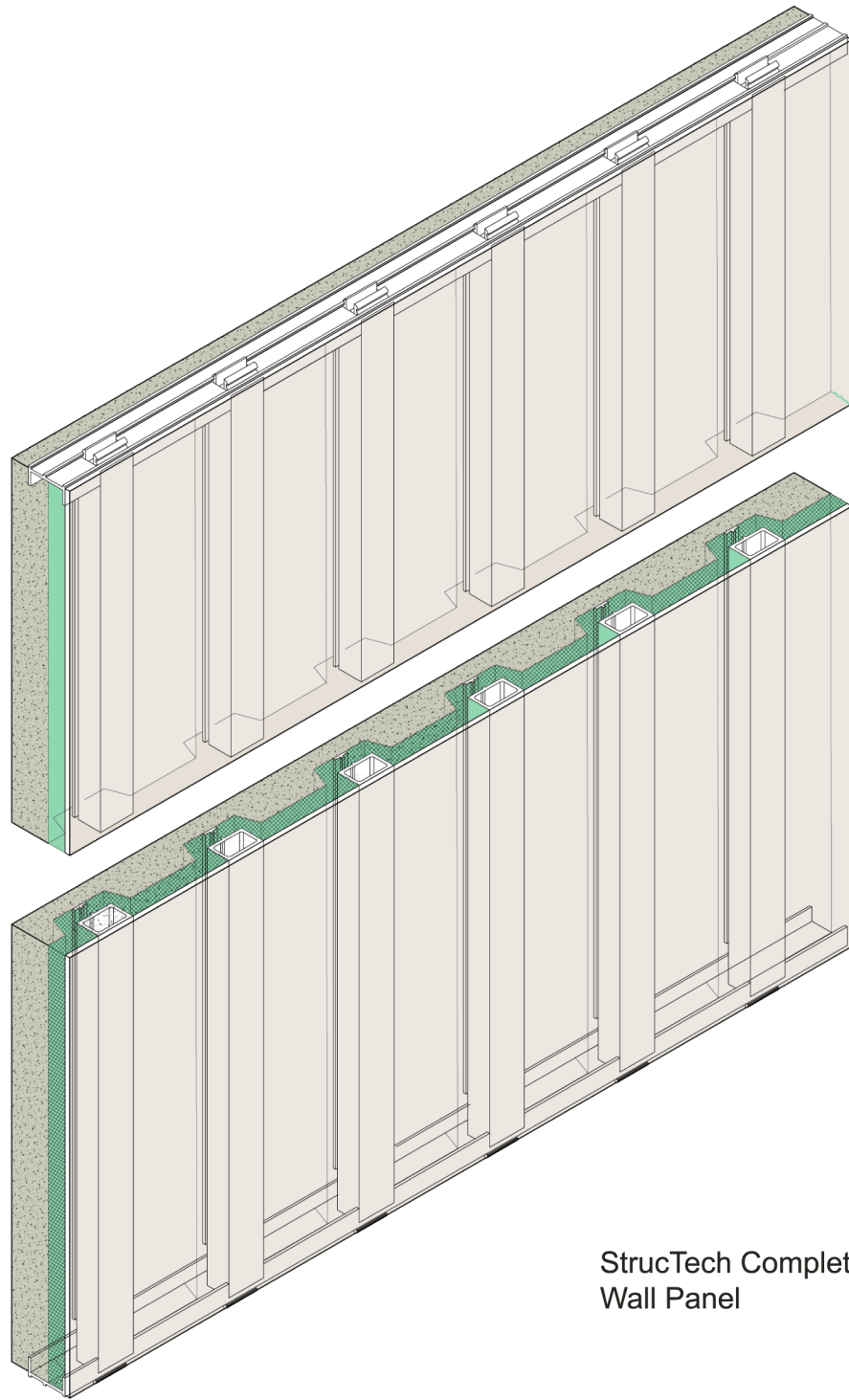






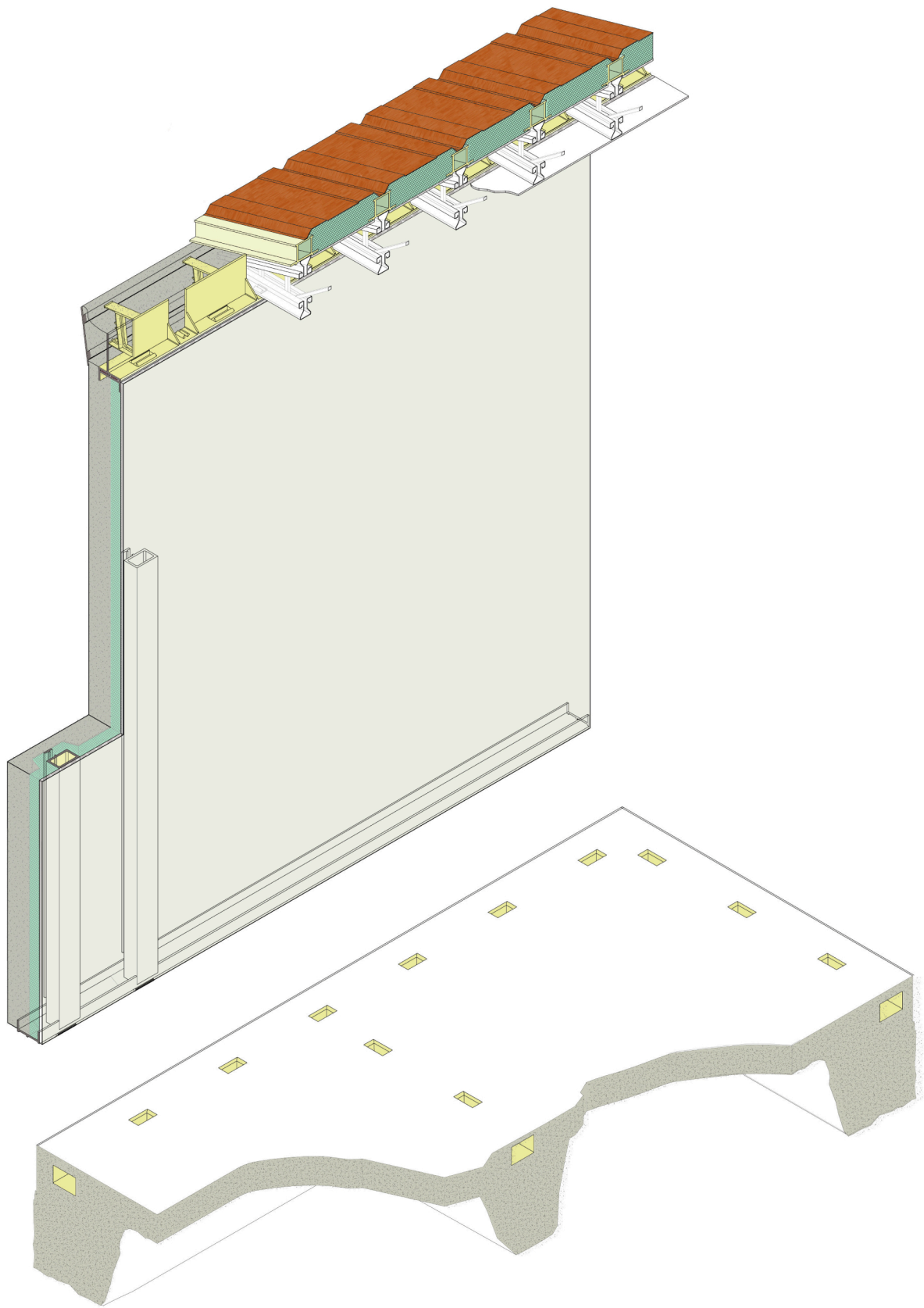




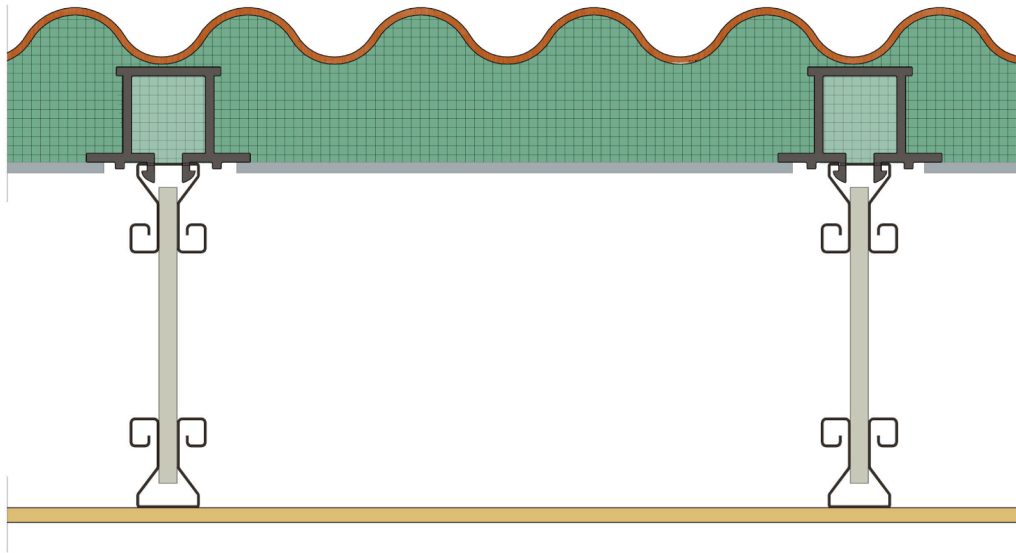


StrucTech Completed  
Wall Panel

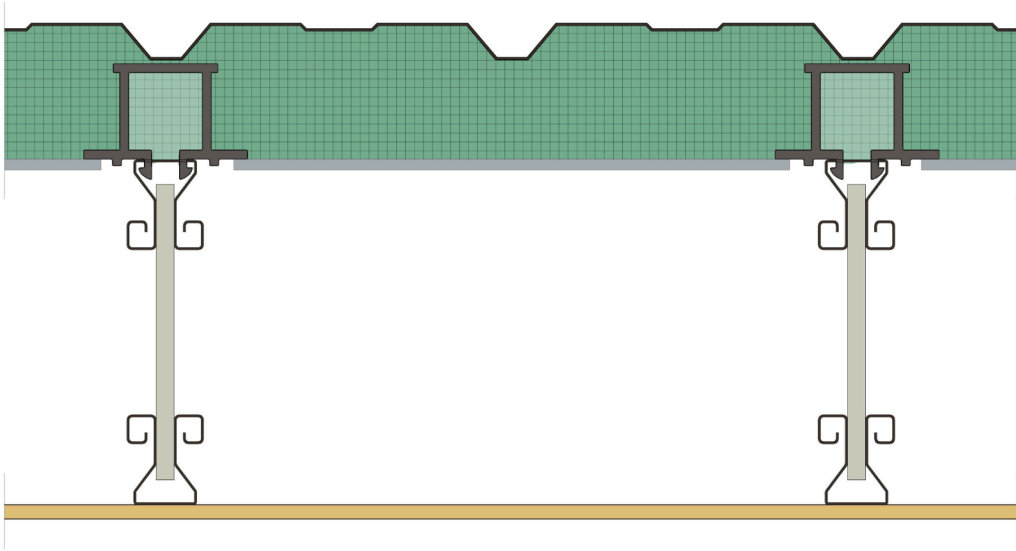




Spanish Tile Roof Panel



Metal Roof Panel



Adability of Support System

