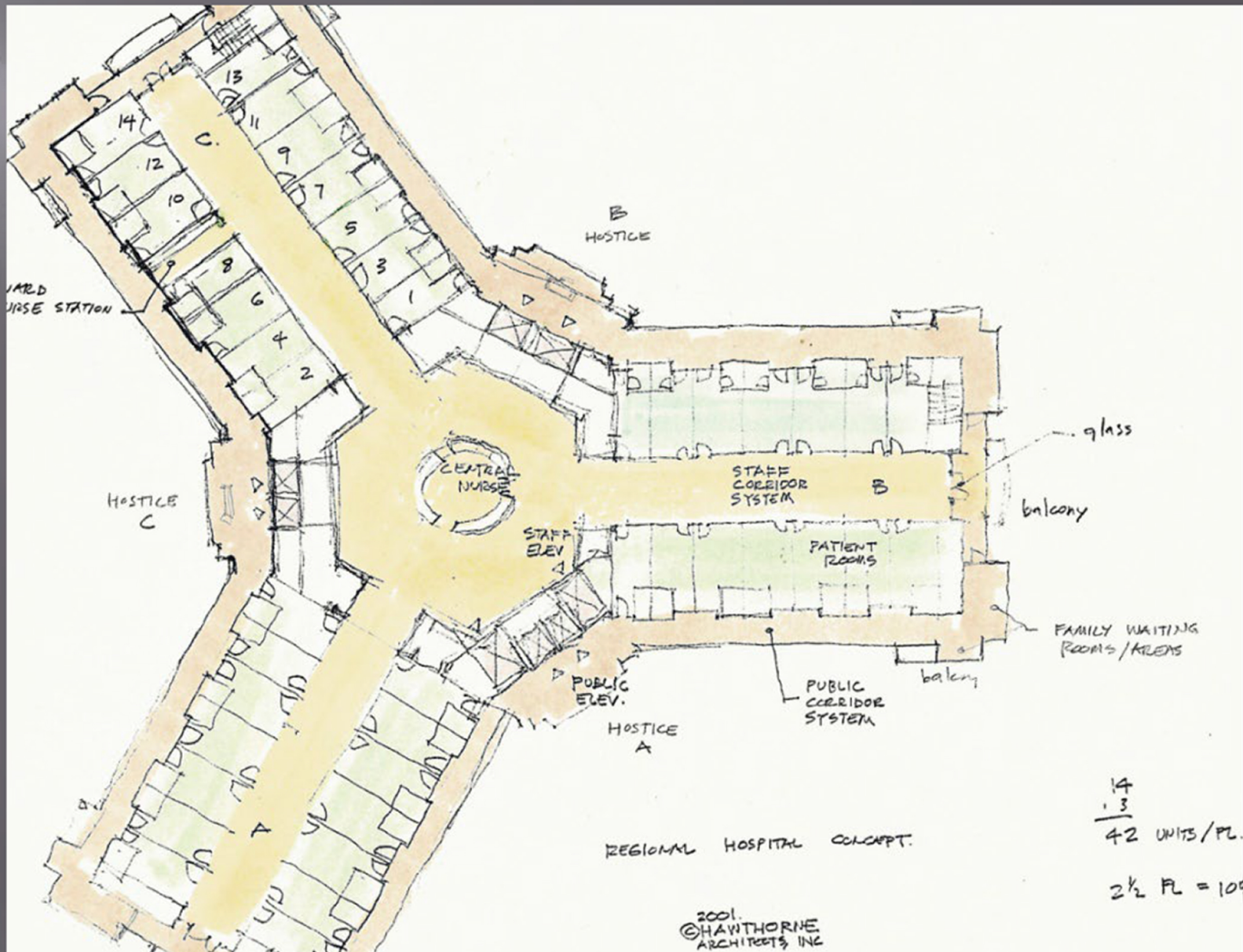
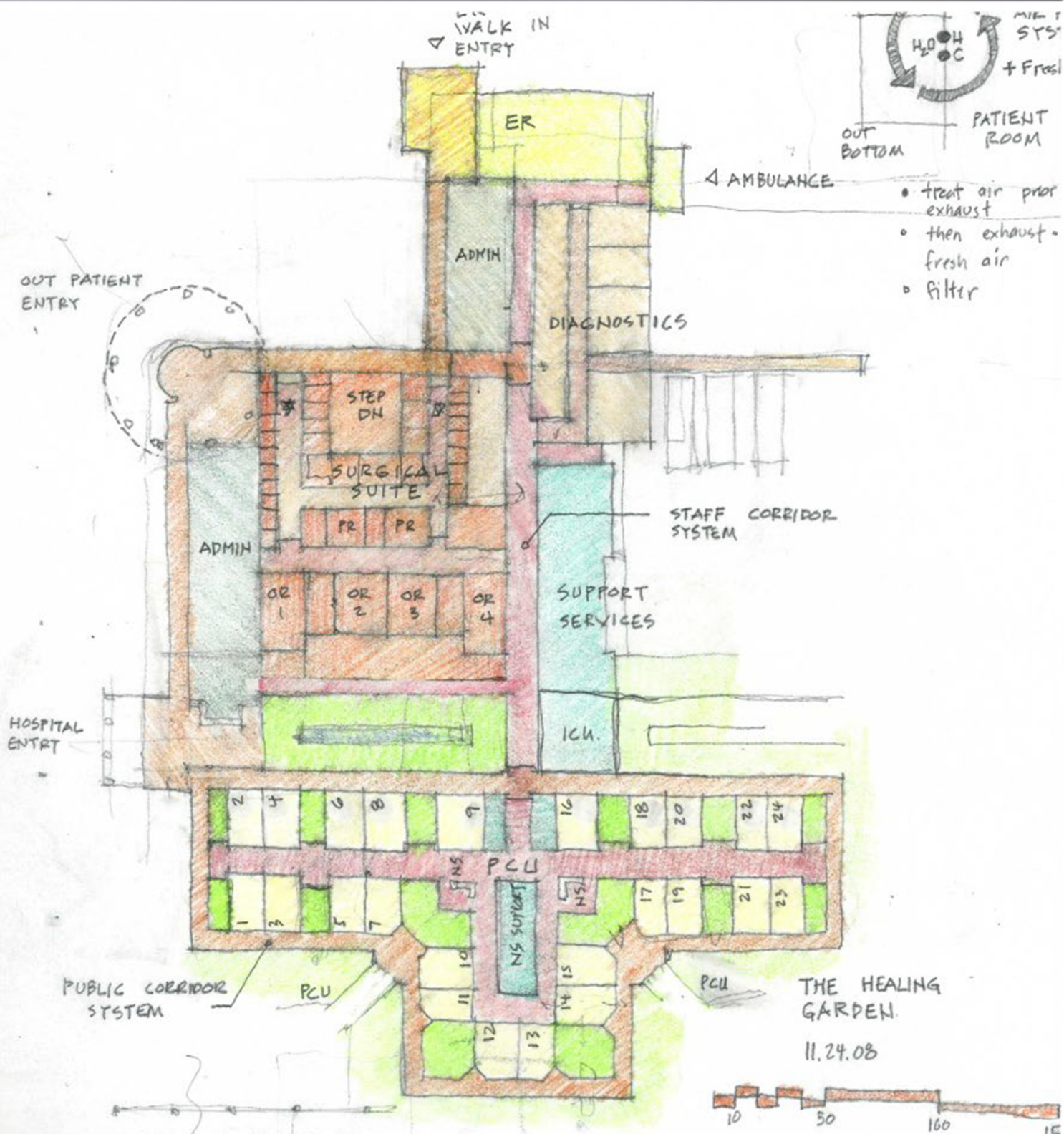


How do we build better Facilities?

The answer is to design a facility that breaks the pathogen chain in the transmission of air, droplet and contact transmission.

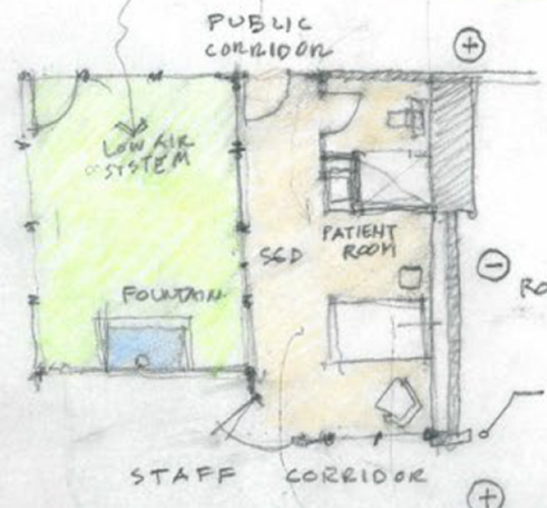
- 1) Develop a dual corridor system that isolated the public and staff circulation systems, thus minimizing all forms of contact exposure.
- 2) Modify the mechanical systems to establish negative pressure systems in the Patient Rooms, post treat the exhaust air, and provide isolated systems.





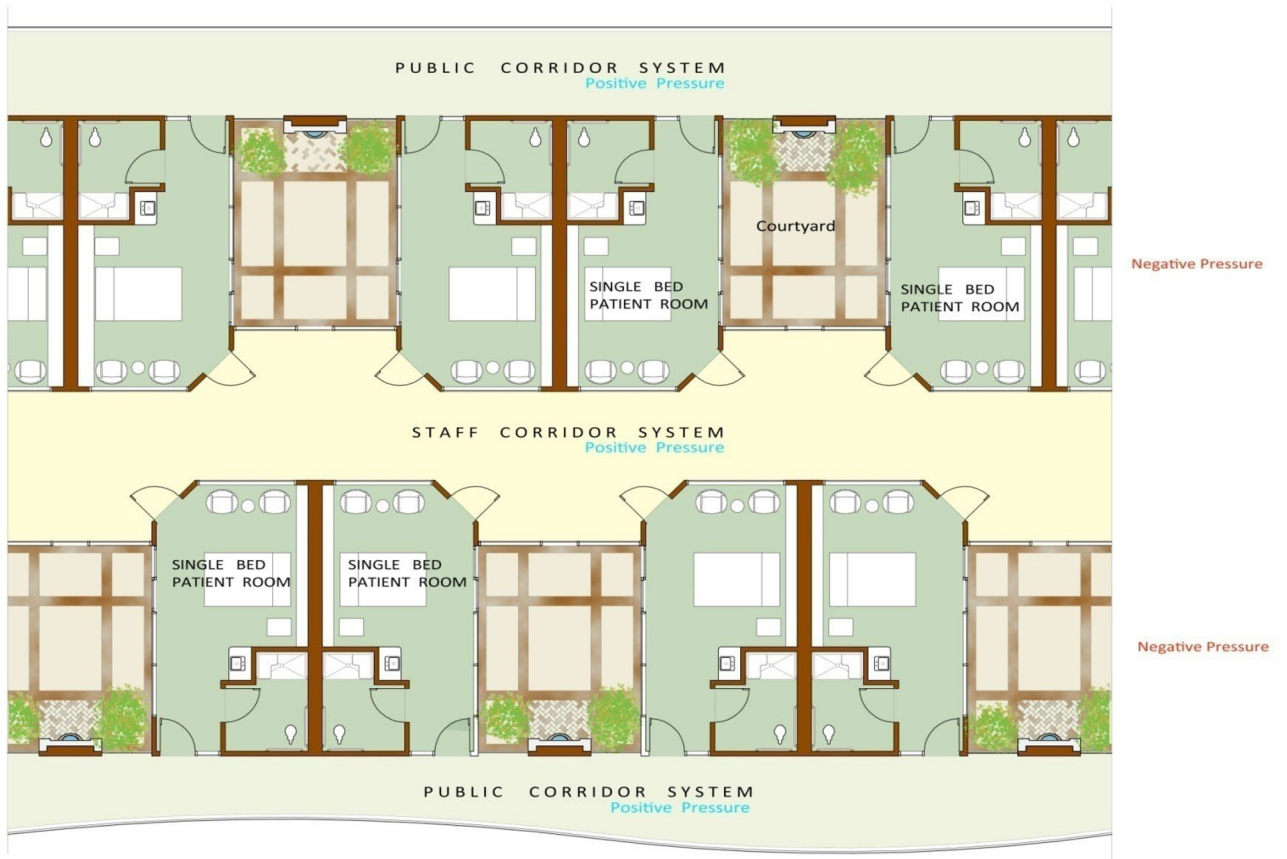
- treat air prior exhaust
- then exhaust - fresh air
- filter

THE HEALING GARDEN.
11.24.08



COMPLETE ISOLATION OF PUBLIC + STAFF CIRCULATION SYSTEMS
MAX PATIENT CARE • MIN EXPOSURE
PLUG + PLAY MEP WITH AMBILICAL

GLASS WALL - ABILITY FOR FULL OBSERVATION - INT. MINI BLIND OR FOG OUT FOR CONTROL



Dual Corridor Patient Care Unit